



- Live monitoring of the 127NH power plant from anywhere, at anytime
- Remote, dial up access to the PECO II 127NH series power plant via a modem
- Local access to the 127NH through a serial connection
- Envision™ software runs on Windows NT 4.0, 98, 2000, and XP
- Setpoints such as float voltage can be viewed/changed
- Alarm threshold values such as high and low voltage alarms can be viewed/changed
- Graphical user interface shows real-time plant conditions and status information
- Model and serial number information is available for inventory tracking
- Information about the individual rectifiers and plant controller, such as software version and manufacturing date, is readily available
- Operation modes such as temperature compensation and float/equalize can be enabled
- Individual rectifier status can be checked

See What Others Can't!



Installation

For dial-up access using a modem:

- Connect the power plant to the telephone line using a standard phone connector and line. The modem connection is located on the front of the system "simple" controller.
- Using Envision™ software, users simply dial the phone number of the site to connect to the plant.

For local connection using a serial port:

- Connect the power plant and PC using the specified 9-pin to 9-pin cable (included in shipment of the software). The serial port is located on the front of the system "simple" controller.

Software Installation:

1. Insert the Envision™ CD into the PC's CD drive
2. Using Windows, click the Start button and select Run
3. Click on Browse and navigate to the CD drive in use
4. Select setup.exe
5. Wait for install-shield to start up
6. When the Envision™ window appears, you are ready to begin the installation. Follow the on-screen instructions to complete the installation.

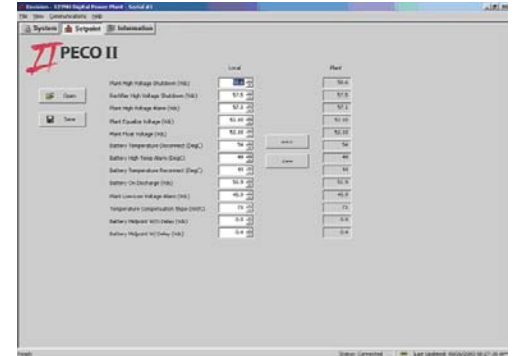




Setpoint Screen

Using the setpoint screen, users can view or change any of the following setpoints:

- Plant high voltage shutdown
- Rectifier high voltage shutdown
- Plant high voltage alarm
- Plant equalize voltage
- Plant float voltage
- Battery temperature disconnect
- Battery high temperature alarm
- Battery temperature reconnect
- Battery on discharge
- Plant low-low voltage alarm
- Temperature compensation slope
- Battery midpoint without delay
- Battery midpoint with delay
- Load A reconnect
- Load A disconnect
- Load B reconnect
- Load B disconnect



System Screen

The system screen is where the user can view the operation of the 127NH system. Plant voltage and current are displayed, as well as alarms. The status of each rectifier is shown, which includes line voltage, current output, rectifier status, and the state of the fans. Battery information is also available on this screen and includes string voltage, midpoint voltage, and temperature for up to two battery strings.

Three modes are selectable from the System Screen:

- Temperature compensation
- Test
- Float/equalize



Information Screen

This screen provides the following information for the Simple Controller, Distribution Monitor Module, and each rectifier:

- Part number
- Revision level
- CLEI number
- Software version
- Serial number
- Manufacture date
- CPR number

